

Carbery attic tanks have been specifically designed for the storage of water at domestic installations. Today, Carbery loft tanks provide reliable cold water storage to thousands of homeowners and householders across Ireland. Lightweight and easily handled, Carbery loft tanks are manufactured from corrosion resistant polyethylene - making them an ideal replacement for old-fashioned, heavyweight, galvanised attic tanks.



**AT04R 10 GALLON ATTIC TANK**

Length:	455mm
Width:	310mm
Height:	300mm
Maximum Capacity:	50 litres   11 gal.
Operating Capacity:	20 litres   4 gal.



**AT25R 25 GALLON ATTIC TANK**

Length:	857mm
Width:	552mm
Height:	505mm
Maximum Capacity:	175 litres   39 gal.
Operating Capacity:	110 litres   24 gal.



**AT45R-SLIM 27 GALLON ATTIC TANK**

Length:	1,169mm
Width:	454mm
Height:	450mm
Maximum Capacity:	180 litres   40 gal.
Operating Capacity:	120 litres   26 gal.



**AT60R-SLIM 46 GALLON LOFT TANK**

Length:	1,340mm
Width:	470mm
Height:	458mm
Maximum Capacity:	215 litres   47 gal.
Operating Capacity:	140 litre   31 gal.



**AT40R 60 GALLON LOFT TANK**

Length:	1,003mm
Width:	596mm
Height:	608mm
Maximum Capacity:	285 litres   63 gal.
Operating Capacity:	175 litres   39 gal.



**AT80R-SLIM 70 GALLON LOFT TANK**

Length:	1,616mm
Width:	553mm
Height:	550mm
Maximum Capacity:	327 litres   70 gal.
Operating Capacity:	220 litres   48 gal.



**AT50R 75 GALLON LOFT TANK**

Length:	1,045mm
Width:	665mm
Height:	660mm
Maximum Capacity:	350 litres   77 gal.
Operating Capacity:	249 litres   54 gal.

- All tanks are made with WRAS Approved material

- Optional Lids available for all open loft tanks

Carbery attic tanks have been specifically designed for the storage of water at domestic installations. Today, Carbery loft tanks provide reliable cold water storage to thousands of homeowners and householders across Ireland. Lightweight and easily handled, Carbery loft tanks are manufactured from corrosion resistant polyethylene - making them an ideal replacement for old-fashioned, heavyweight, galvanised attic tanks.



**AT44E 44 GALLON LOFT TANK**

Length:	1,106mm
Width:	475mm
Height:	475mm
Maximum Capacity:	225 litres   49 gal.
Operating Capacity:	200 litres   44gal.



**AT58E 58 GALLON LOFT TANK**

Length:	1,571mm
Width:	475mm
Height:	456mm
Maximum Capacity:	308 litres   68 gal.
Operating Capacity:	265 litres   58 gal.

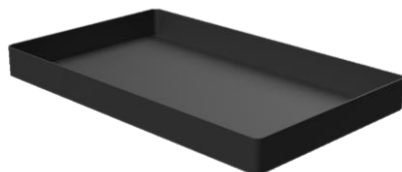


**AT100E 100 GALLON LOFT TANK**

Length:	1,765mm
Width:	580mm
Height:	550mm
Maximum Capacity:	533 litres   117 gal.
Operating Capacity:	455 litres   100 gal.

- All tanks are made with WRAS Approved material

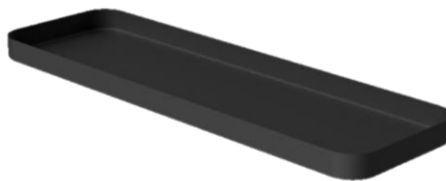
## Drip Trays



**RECTANGULAR DRIP TRAY**

Length:	1,250mm
Width:	760mm

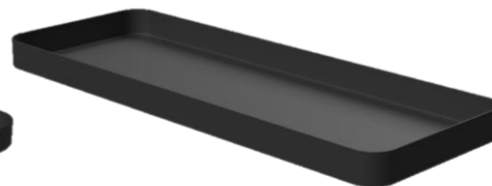
Suitable For The Following Models:  
AT25R, AT40R, AT50R.



**SLIMLINE DRIP TRAY**

Length:	1,746mm
Width:	650mm

Suitable For The Following Models:  
AT45R, AT60R, AT80R, AT44E, AT58E.



**SLIMLINE 100 GALLON DRIP TRAY**

Length:	1,901mm
Width:	713mm

Suitable For The Following Models:  
AT100E